

Name: _____
MAT 295

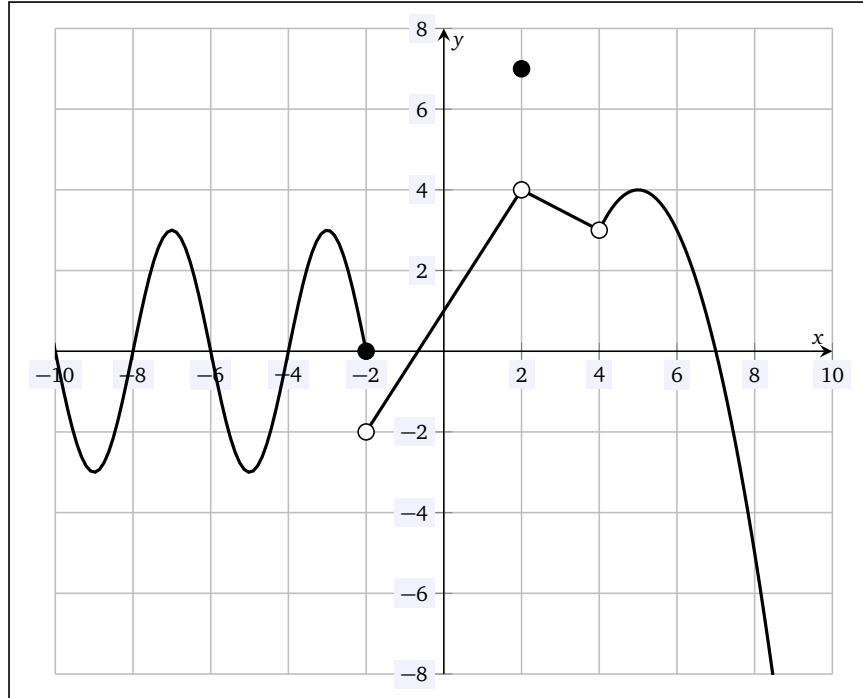
Quiz 1
Fall 2016

Problem 1: $\lim_{x \rightarrow 1} \frac{x^2 + x - 2}{x - 1}$

Problem 2: $\lim_{x \rightarrow 0} \frac{\sin 2x}{3x}$

Problem 3: $\lim_{x \rightarrow 0} x \cot 2x$

Problem 4: A function $f(x)$ is plotted below. Use the plot to find the following values (if the value is not defined or does not exist, write DNE):



(a) $f(0)$

(h) $\lim_{x \rightarrow 2} f(x)$

(b) $\lim_{x \rightarrow -2^-} f(x)$

(i) $f(2)$

(c) $\lim_{x \rightarrow -2^+} f(x)$

(j) $\lim_{x \rightarrow 4^-} f(x)$

(d) $\lim_{x \rightarrow -2} f(x)$

(k) $\lim_{x \rightarrow 4^+} f(x)$

(e) $f(-2)$

(l) $\lim_{x \rightarrow 4} f(x)$

(f) $\lim_{x \rightarrow 2^-} f(x)$

(g) $\lim_{x \rightarrow 2^+} f(x)$

(m) $f(4)$